

Classification:

EC15-021b

Reference:

ITB17-026b

COPYRIGHT© NISSAN NORTH AMERICA, INC.
Date:

August 20, 2018

INFINITI; FUEL TANK IS EXTREMELY DIFFICULT TO FILL

This bulletin has been amended. Changes have been made throughout. It is necessary for you to read this revised procedure to properly perform this action. Please discard previous versions of this bulletin.

APPLIED VEHICLES:	2004 I35 (CA33)	2013 JX35 (L50)
	2008-2012 EX35 (J50)	2014-2017 QX60 (L50)
	2013 EX37 (J50)	2014-2017 Q50 (V37)
	2014-2016 QX50 (J50)	2006-2010 M45/M35 (Y50)
	2003-2008 FX45/FX35 (S50)	2011-2013 M37/M56 (Y51)
	2009-2012 FX35 (S51)	2014-2017 Q70 (Y51)
	2013 FX37 (S51)	2004-2013 QX56 (JA60, Z62)
	2009-2013 FX50 (S51)	2014-2016 QX80 (Z62)
	2014-2017 QX70 (S51)	2014-2015 Q60 Coupe (V36)
	2003-2013 G25/G35/G37 (V35, V36)	2017 Q60 Coupe (V37)
	2015 Q40 (V36)	

IF CUSTOMER REPORTS:

Customer routinely experiences difficulty fueling the vehicle at different fuel stations (filling nozzle shuts off every few seconds while filling at multiple stations and using multiple filling pumps).

IMPORTANT:

- If the customer does not report the above symptoms, **this bulletin does not apply.**
- If the customer reports intermittent (but not consistent) difficulty re-fueling, **this bulletin does not apply.**

ACTION:

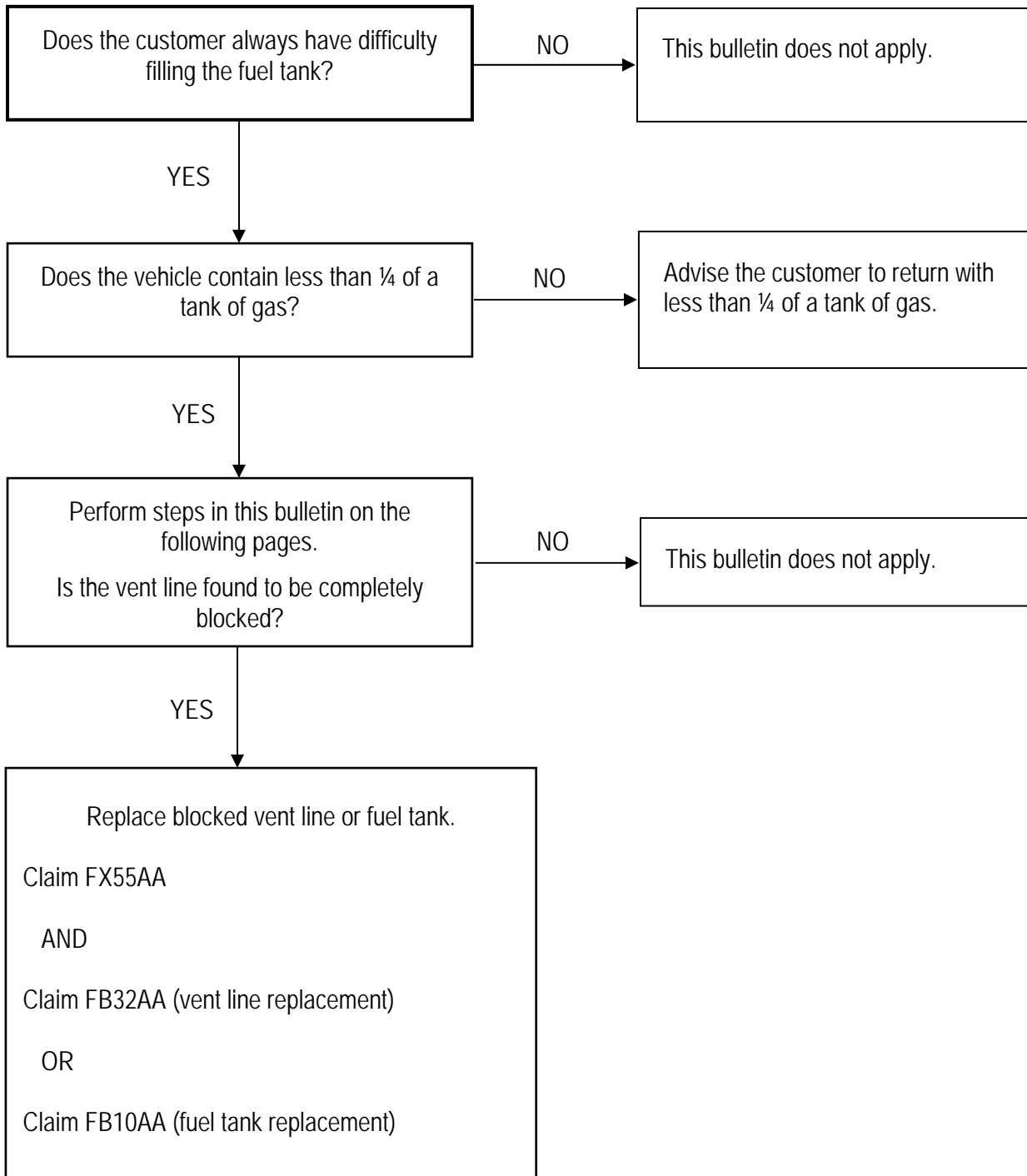
Perform the Inspection Procedure in this bulletin, starting on page 4, **only if** the customer reports symptoms as described above.

NOTE: Refer to the Repair Overview on page 2.

IMPORTANT: The purpose of ACTION (above) is to give you a quick idea of the work you will be performing. You **MUST** closely follow the entire INSPECTION PROCEDURE as it contains information that is essential to successfully completing this INSPECTION.

Infiniti Bulletins are intended for use by qualified technicians, not 'do-it-yourselfers'. Qualified technicians are properly trained individuals who have the equipment, tools, safety instruction, and know-how to do a job properly and safely. NOTE: If you believe that a described condition may apply to a particular vehicle, DO NOT assume that it does. See your Infiniti retailer to determine if this applies to your vehicle.

REPAIR OVERVIEW



Essential Tools

- Tech-Mate Dual Purpose Diagnostic Leak Detector (part number 697-95-0130-IF).



Figure A

Additional Essential Tools are available from Tech•Mate online: www.infinititechmate.com, or by phone: 1-800-662-2001.

INSPECTION PROCEDURE

IMPORTANT: Follow all cautions, warnings, and notes in the Electronic Service Manual (ESM) when working on or near the vehicle fuel system.

1. If the vehicle fuel tank is above $\frac{1}{4}$ of a tank, this investigation process **CANNOT** be performed. Request customer to return with $\frac{1}{4}$ of a tank or less.
2. Connect the Tech-Mate Dual Purpose Diagnostic Leak Detector (part number 697-95-0130-NIS) to the EVAP service port.
 - Follow the instructions included with the Leak Detector to introduce “smoke” into the EVAP system.
3. Connect the CONSULT-III plus (C-III plus) VI to the vehicle and open C-III plus on the CONSULT PC.
4. Select **Diagnosis (One System)** and **ENGINE**, and then **Active Test**.
5. In Active Test, select **VENT CONTROL/V** and close the EVAP Canister Vent Control Valve by selecting **ON**.
6. Remove the fuel cap.
 - Does any smoke come out of the filler tube?
 - Does the flow meter show any flow?

- **If YES to either of the above:**

This bulletin does not apply.

NOTE: Further diagnostic may be required and is not covered under this bulletin. Refer to the ESM for further information.

- **If NO to both of the above:** Go to step 7.

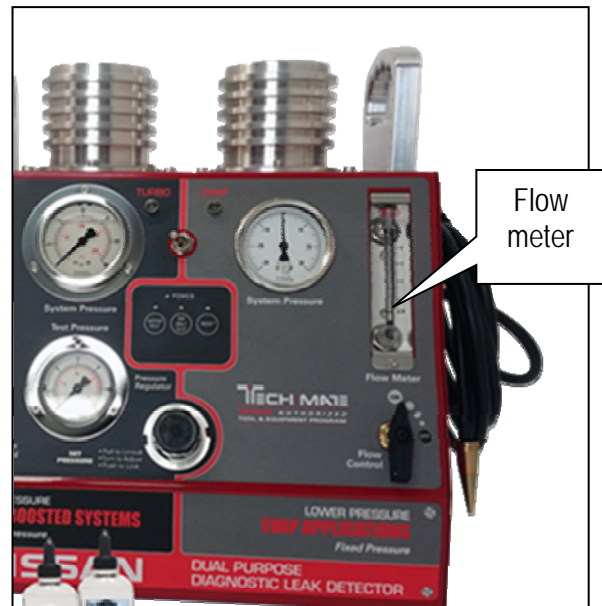


Figure 1

7. Is the vent line part of the tank assembly? See Figure 2 for reference.

- Refer to the electronic parts catalog (FAST or equivalent) to confirm if the vent line is part of the fuel tank assembly.

➤ **YES:** Replace the fuel tank.

- Refer to the ESM, section, **FL – Fuel System** to replace the fuel tank.

➤ **NO:** Replace **ONLY** the section of the vent line that contains the blockage.

NOTE: The vent line between the tank and canister may be made up of multiple parts.

- Refer to the ESM, section, **FL – Fuel System** to replace the vent line assembly.

Figure 2 below illustrates a basic evaporative emissions system and is for reference only.

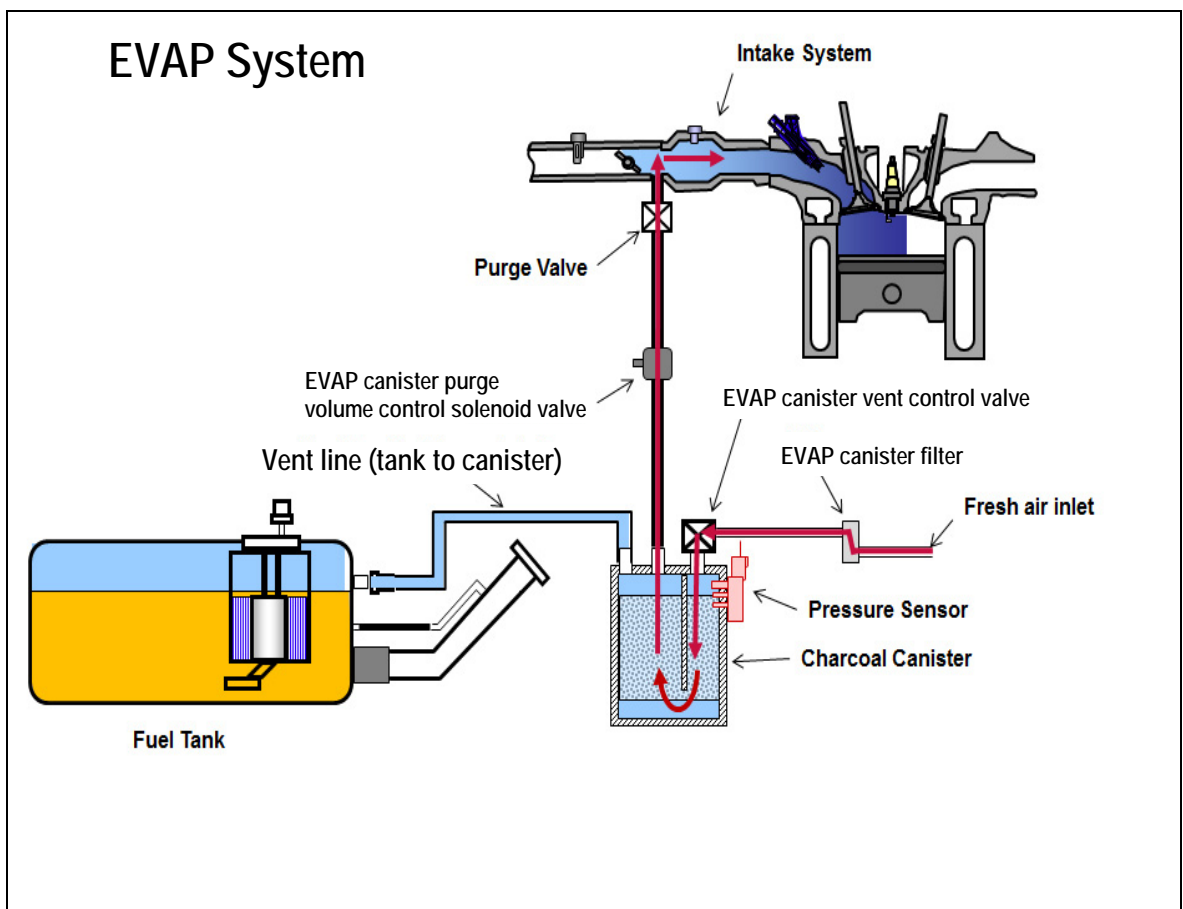


Figure 2

COVERED PARTS

(Parts Covered by this Emission Warranty Coverage Enhancement)

NOTE:

- This parts table is a list of parts that are covered by this emission warranty coverage enhancement. It may list more than one part number for a given Model/Model Year. For this reason it is required that the electronic parts catalog (FAST or equivalent) be used to obtain the specific part number for a given vehicle.
- The parts listed on the following page(s) include a wide range of evaporative emissions vent lines and fuel tanks for a large number of vehicles. The usage rate for these parts is expected to be very small. Infiniti recommends that dealers do not stock these parts and order only as necessary to ensure parts are available when needed, especially for older models.

Model	Description	Part Number	Quantity
2004 I35 (A33)	TANK ASSY-FUEL	17202-2Y910	1
	FUEL TANK	17202-6Y300	1
2008-2016 EX35/EX37/QX50 (J50)	HOSE-VENTILATION	17226-CE800	1
2013-2017 JX35/QX60 (L50)	TUBE-EVAPOLATION PIPING	17224-3JA0A	1
2014-2016 QX60 HEV (L50)	TUBE-EVAPOLATION PIPING	17224-3JA0A	1
2003-2008 FX35/FX45 (S50)	HOSE-VENTILATION	17226-CE800	1
2009-2017 FX35/FX37/FX50/QX70 (S51)	HOSE-VENTILATION	17226-CG700	1
	HOSE-VENTILATION	17226-CE800	1
	HOSE VENT	17226-EG005	1
2003-2008 G35 Sedan/Coupe (V35, V36)	TUBE-VENTILATION	17224-EV10A	1
	HOSE-VENTILATION	17226-AC305	1
	HOSE-VENTILATION	17226-CE800	1
2008-2013 G25/G37/Q40 Sedan (V36)	TUBE-VENTILATION	17224-1NF0B	1
	HOSE VENT	17226-EG005	1
	HOSE-VENTILATION	17226-EH105	1
2009-2015 G37/Q60 Convertible (V36)	HOSE VENT	17224-1NG0A	1
	TUBE-VENTILATION	17226-CE800	1
	TUBE-VENTILATION	17226-EH105	1
2014-2015 Q60 Coupe (V36)	HOSE VENT	17224-1NG0A	1
	HOSE-VENTILATION	17226-CE800	1
	HOSE VENT	17226-EG005	1
	HOSE-VENTILATION	17226-EH105	1
2017 Q60 Coupe (V37)	TUBE-VENTILATION	17224-4HA0A	1
	TUBE-VENTILATION	17224-4HD0B	1
	HOSE-VENTILATION	17226-EH105	1
2014-2017 Q50 Sedan (V37)	TUBE-VENTILATION	17224-4HA0A	1
	TUBE-VENTILATION	17224-4HD0B	1
2006-2010 M35/M45 (Y50)	HOSE-VENTILATION	17226-EH105	1
2012-2013 M35 Hybrid (Y50)	HOSE-VENTILATION	17226-EH105	1
2011-2017 M37/M56/Q70 (Y51)	TUBE-VENTILATION	17224-1MA0A	1
	HOSE VENT	17226-EG005	1
	HOSE-VENTILATION	17226-EH105	1
2004-2010 QX56 (JA60)	TUBE VENTILATION	17226-ZH000	1
2011-2016 QX56/QX80 (Z62)	HOSE VENT	17226-1LA0A	1

CLAIMS INFORMATION

NOTE:

- The below listed claims information is for the application of emission warranty coverage for this evaporative emission vapor vent line which has been extended to 15 years or 150,000 miles, whichever occurs first, **only in the event that the vent line is found to be completely blocked**. All claims submitted under this emission warranty coverage enhancement will be subject to parts return for verification of the **completely blocked** vent line as the root cause. If the vent line is not **completely blocked**, further diagnostic may be required that is not covered under this bulletin or this enhanced emission warranty coverage.
- Parts claimed under this warranty enhancement will be collected and inspected for blockage. Any repair performed to replace a part that was not **completely blocked** may be charged back to the dealer.

DESCRIPTION	PFP	OP CODE	SYM	DIA	FRT
Inspect EVAP System	(1)	FX55AA	ZE	22	0.4
Install Vent Hose/Line Assembly		FB32AA			(2)

- (1) Reference the electronic parts catalog (FAST or equivalent) and use the part number of the replaced part as the PFP. Only parts listed in the Covered Parts section of this bulletin can be used as the PFP for this emission warranty coverage enhancement.
- (2) Reference the current Infiniti Warranty Flat Rate Manual and use the indicated FRT.

Or

DESCRIPTION	PFP	OP CODE	SYM	DIA	FRT
Inspect EVAP System	(1)	FX55AA	ZE	22	0.4
Install Fuel Tank		FB10AA			(2)

- (1) Reference the electronic parts catalog (FAST or equivalent) and use the part number of the replaced part as the PFP. Only parts listed in the Covered Parts section of this bulletin can be used as the PFP for this emission warranty coverage enhancement.
- (2) Reference the current Infiniti Warranty Flat Rate Manual and use the indicated FRT.