

REAR BUMPER

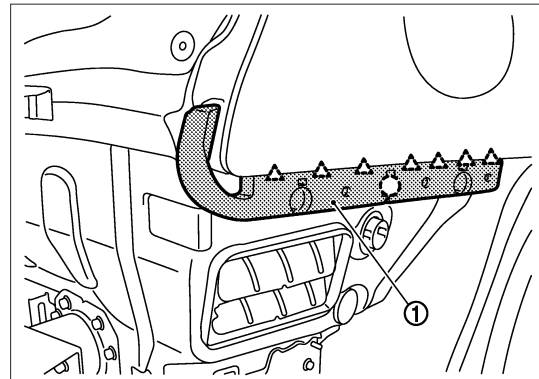
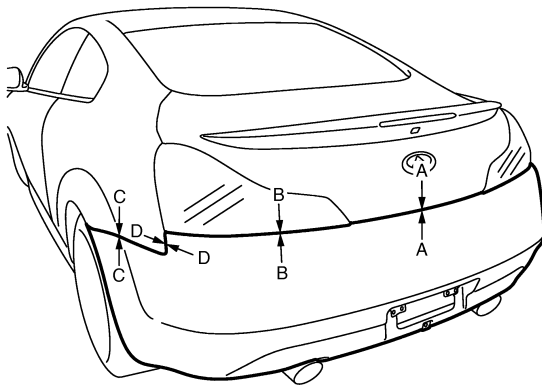
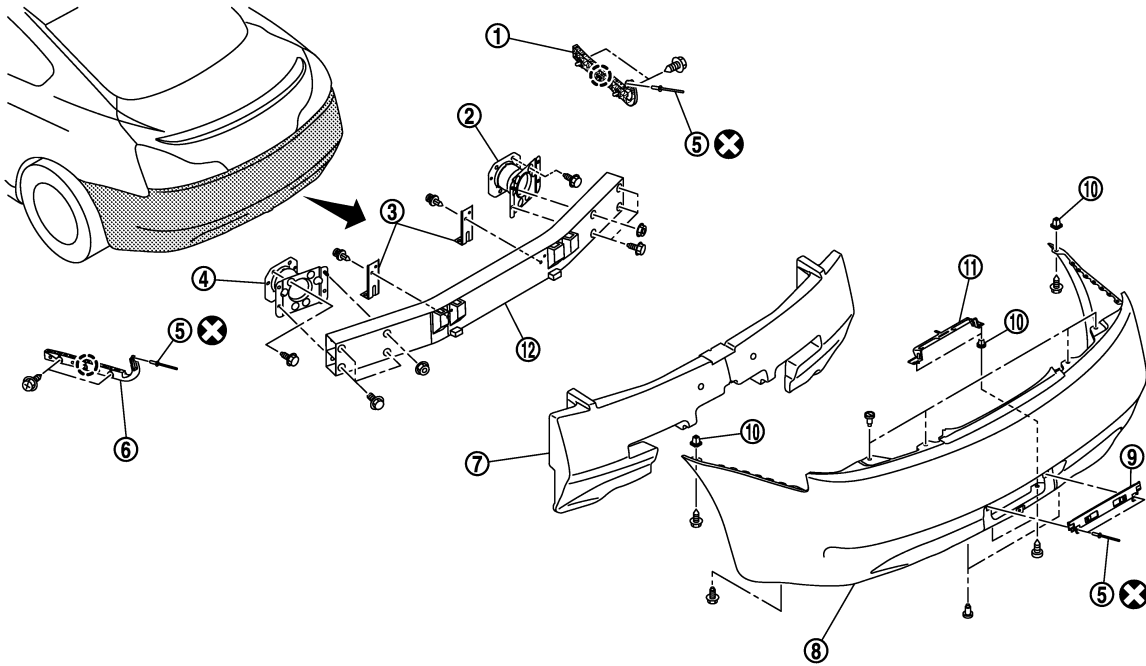
< ON-VEHICLE REPAIR >

REAR BUMPER

Exploded View

INFOID:000000001677478

SEC. 850



JMKIA1232ZZ

- | | | |
|---------------------------|---------------------------|-------------------------------|
| 1. Bumper side bracket RH | 2. Bumper stay RH | 3. Bumper lower retainer |
| 4. Bumper stay LH | 5. Rivet | 6. Bumper side bracket LH |
| 7. Bumper energy absorber | 8. Bumper fascia assembly | 9. Rear license plate bracket |
| 10. Grommet | 11. License lamp bracket | 12. Bumper reinforcement |

- : Clip
 △ : Pawl

REAR BUMPER

< ON-VEHICLE REPAIR >

Refer to [GI-4. "Components"](#) for symbols in the figure.

Removal and Installation

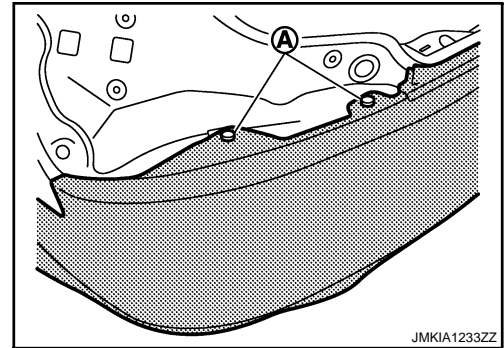
INFOID:000000001677479

REMOVAL

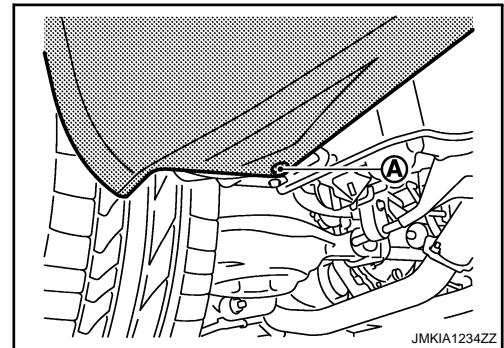
CAUTION:

Bumper fascia is made of resin. Do not apply strong force to it, and be careful to prevent contact with oil.

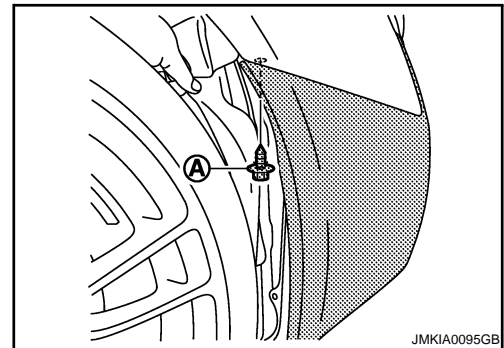
1. Fully open trunk lid assembly.
2. Remove rear combination lamp (LH/RH). Refer to [EXL-200. "Removal and Installation"](#).
3. Remove clips (A) located under rear combination lamp (LH/RH).



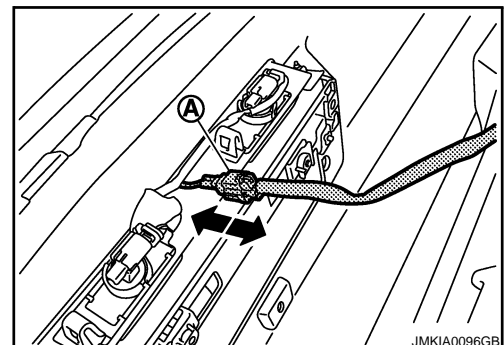
4. Remove bolts (A) of bumper fascia underside (LH/RH).



5. Remove screws (A) of bumper fascia front end upper (LH/RH).



6. Remove clips of bumper fascia underside, and then pull out bumper fascia toward rear of vehicle.
7. Disconnect license plate lamp connector (A).



A

B

C

D

E

F

G

H

I

J

EXT

L

M

N

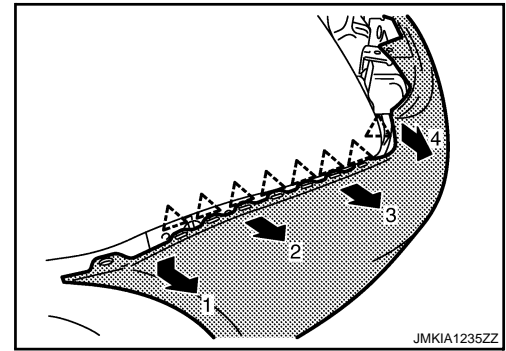
O

P

REAR BUMPER

< ON-VEHICLE REPAIR >

8. Pull the bumper fascia side toward the vehicle side to disengage the fitting of bumper side bracket and bumper fascia side.



9. Remove bumper fascia assembly.

CAUTION:

When removing bumper fascia, 2 workers are required so as to prevent it from dropping.

10. Remove the following parts after removing bumper fascia.
- License plate lamp. Refer to [EXL-204, "Removal and Installation"](#).
 - License lamp bracket.
 - License plate bracket.
 - Bumper lower retainer.
11. Remove bumper energy absorber.
12. Remove license lamp harness clamps of bumper reinforcement.
13. Remove bumper reinforcement mounting nuts and bolts, and then remove bumper reinforcement with power tool.

INSTALLATION

Install in the reverse order of removal.

NOTE:

After installing, perform fitting adjustment.

Portion		Clearance
Rear bumper – Trunk lid	A – A	4.0 – 8.0 mm (0.157 – 0.315 in)
Rear bumper – Rear combination lamp	B – B	0.0 – 3.0 mm (0.000 – 0.118 in)
Rear bumper – Rear fender	C – C	0.0 – 0.8 mm (0.000 – 0.031 in)
Rear bumper – Rear fender	D – D	0.0 – 0.8 mm (0.000 – 0.031 in)